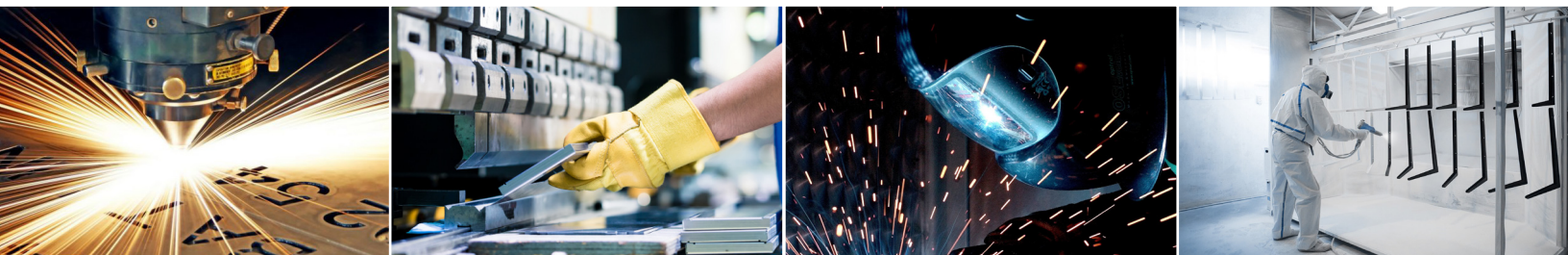


2300 SERIES ROUND BUTTERFLY DAMPER

2300 SERIES ANSI DRILLED - HEAVY DUTY | Rev. 03/04/20

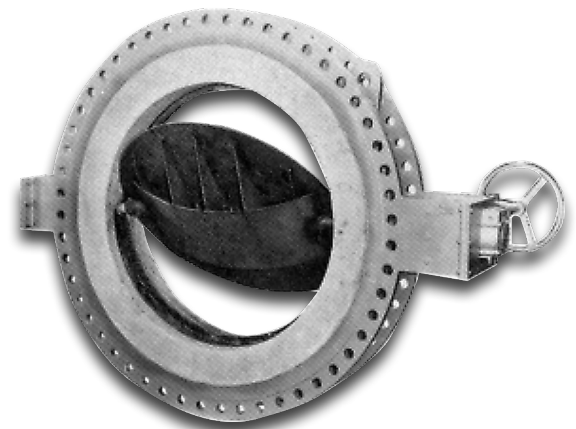
Elite Industrial Controls is an American manufacturer of Industrial Control Valves and Dampers. We offer solutions to Industrial Automation and thermal management solutions serving customers around the world in various industries and across several technological platforms. We are committed to providing customers with service of the highest possible level of quality.



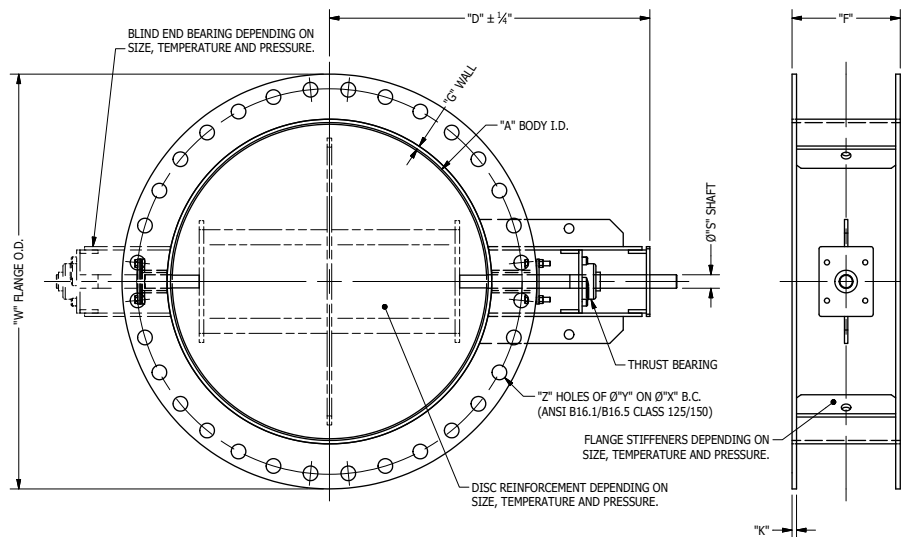
The 2300 series fabricated damper is constructed to bolt up to ANSI drilled flanges up to 144". Each flange is individually bolted to adjacent flange on duct/pipe. Flange stiffeners are provided depending on damper size and service conditions. Flange faces are standard mill finish. Machined/serrated flanges can be provided as an option. Materials of construction are identical to the 2400 series. Damper can be supplied in all weldable materials.

Construction and Material	
Body, Disc & Flange	Standard - Carbon Steel Optional - 304 SS 4" to 10" - SCH-40 Wall Thickness
Drilling	Ductwork
Shaft	Standard - 304 SS (Stub) Optional - Through Shaft
Bushings	Carbon/Graphite
Packing Follower	Standard - 304 SS
Stuffing Box Housing	Standard - Carbon Steel Optional - 304 SS
Bearing	Power - Std. Blind - Optional, Standard on sizes 72" and larger

Operating Conditions	
Max. Temp.	Carbon Steel - 850°F 304 SS - 2600°F
Max. Static Pressure	50 PSIG



MODEL 2300 SERIES BUTTERFLY CONTROL VALVE



*Larger sizes available on request.

Nom. Size	Valve Dimensions (In Inches)							Bolting (In Inches)			Est. Weight (In lbs)
	A	D	F	G	K	S	W	X	Y	Z	
4	4	14.75	9	See Note	0.375	0.75	9	7.5	0.75	8	74
5	5.0625	14.75	9	See Note	0.375	0.75	10	8.5	0.875	8	80
6	6.0625	14.75	9	See Note	0.375	0.75	11	9.5	0.875	8	83
8	8	17.25	9	See Note	0.375	1	13.5	11.75	0.875	8	99
10	10	18.875	9	See Note	0.375	1	16	14.25	0.875	12	107
12	12	20.125	9	0.375	0.375	1	19	17	1	12	123
14	13.5	21	12	0.375	0.375	1	21	18.75	1.125	12	149
16	15.5	22.125	12	0.375	0.375	1	23.5	21.25	1.125	16	165
18	17.5	23.125	12	0.375	0.375	1	25	22.75	1.125	16	175
20	19.5	24.25	12	0.375	0.375	1.25	27.5	25	1.25	20	200
22	21.5	25.25	12	0.375	0.375	1.25	29.5	27.25	1.25	20	216
24	23.25	26.25	12	0.375	0.5	1.25	32	29.5	1.375	20	263
26	25.25	27.375	12	0.375	0.5	1.25	34.25	31.75	1.375	24	285
28	27.25	28.375	12	0.375	0.5	1.25	36.5	34	1.375	28	308
30	29.25	29.5	12	0.375	0.5	1.5	38.75	36	1.375	28	331
32	31.25	30.5	12	0.375	0.5	1.5	41.75	38.5	1.625	28	376
34	33.25	31.5	12	0.375	0.5	1.5	43.75	40.25	1.625	32	440
36	35.25	32.5	12	0.375	0.5	1.5	46	42.75	1.625	32	521
38	37.25	33.625	12	0.5	0.5	1.5	48.75	45.25	1.625	32	567
40	39.25	34.75	12	0.5	0.5	1.5	50.75	47.25	1.625	36	601
42	41.25	35.75	12	0.5	0.5	1.5	53	49.5	1.625	36	648
44	43.25	36.75	12	0.5	0.5	1.75	55.25	51.75	1.625	40	758
46	45.25	37.75	12	0.5	0.5	1.75	57.25	53.5	1.625	40	805
48	47.25	38.75	12	0.5	0.5	1.75	59.5	56	1.625	44	851

*Sizes 4-10" have Sch. 40 Wall thickness

VALVE SEAT OPTIONS

*Leakage based on damper capacity

CONVENTIONAL SEAT
Swing-thru design,
*4-5% leakage

SCISSOR SEAT
Swing-thru design,
approx. *1-2% leakage

METAL SEAT
Materials same as body -
approx. *1% leakage

TADPOLE SEAT
Material furnished varies with service.
Temp. to 1800°F,
approx. *1/4 of 1% leakage