

VALVE UNINTERRUPTIBLE POWER SUPPLY (UPS) SOLUTION

Turn fail-last valves into fail-safe

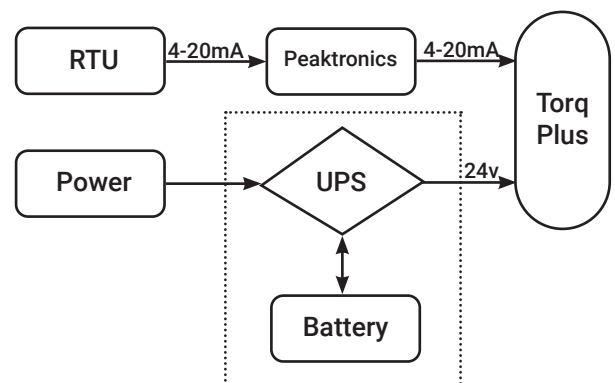
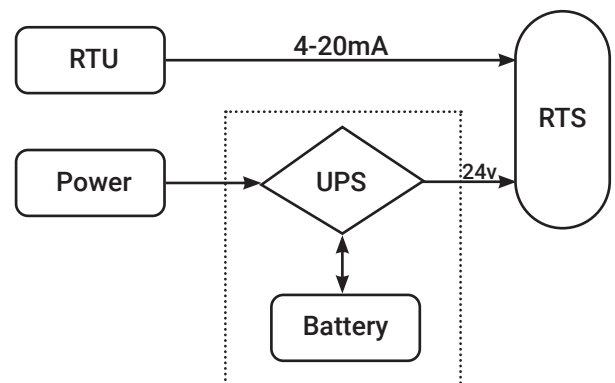
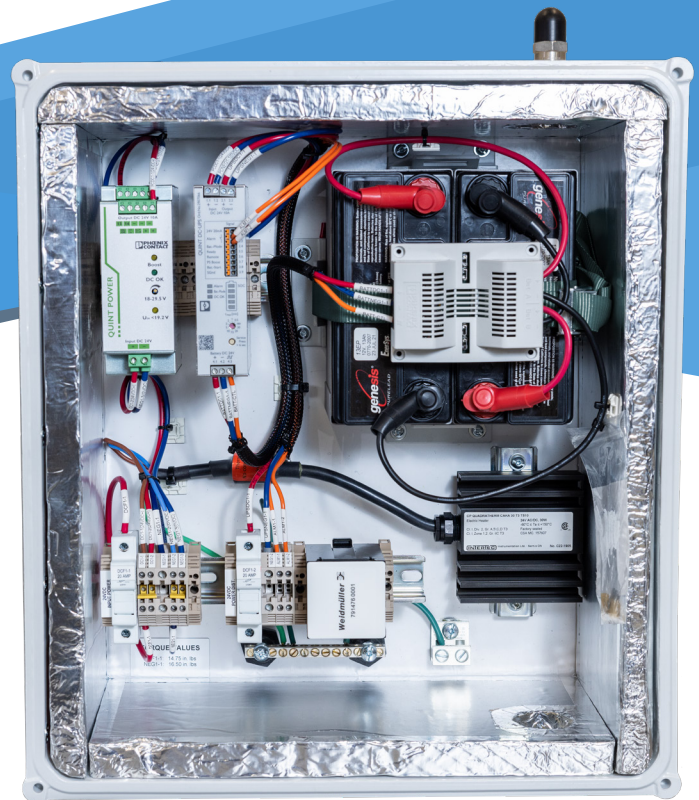
Providing electric actuators with power to move to a fail position.

Providing electric actuators with power to move to a fail position is crucial for many well sites and other remote operating areas. In these locations, valves must be able to fail open or closed in case of a power loss. While some actuators offer a spring-driven fail position, this solution may not always be suitable for such applications.

Spartan's Valve Uninterruptible Power Supply provides the necessary power to allow a 24VDC electric actuator to move safely to the desired position when power is lost. It ensures that the valve can maintain its fail position effectively.

The Valve UPS Solution offers a robust, cost-effective means of enabling a 24VDC electric actuator to move to the safe position during power loss, using its existing power connections.

- Enables the actuator to electrically fail-safe
- Cost savings when compared to a mechanical fail-last solution
- Plug and play into any existing system
- Rated for -40°C

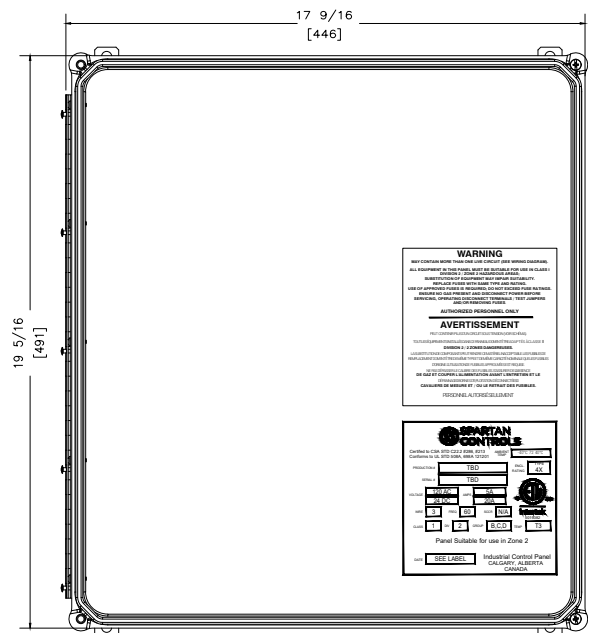




The Valve UPS is installed in line with the valve's 24VDC supply power. During normal operating conditions, the UPS is charged from the valve's supply power, maintaining system reliability.

Upon the loss of power, the UPS will automatically engage, ensuring that the valve's ability to move is maintained. Simultaneously, it will send an alarm to the remote terminal unit (RTU), indicating that the Valve UPS Solution is active. This real-time notification empowers the RTU to take appropriate action in response to the power outage.

The UPS will continue to provide power to the valve until power is restored, or the battery is exhausted.



Specification or Operating Parameter	Value, Setting or Range
Environment	-4° to 140°F (-20 to 60°C)
Ingress Protection	NEMA 4X
Size	19 5/16" H x 17 9/16" W x 8" D
Weight	10 lbs.
Power Input	24 VDC, 14.75A
Power Output	14 VDC, 10A
UPS Capacity	13AH
Area Classification	CLASS I, DIV. 2 GROUPS B, C & D, T3