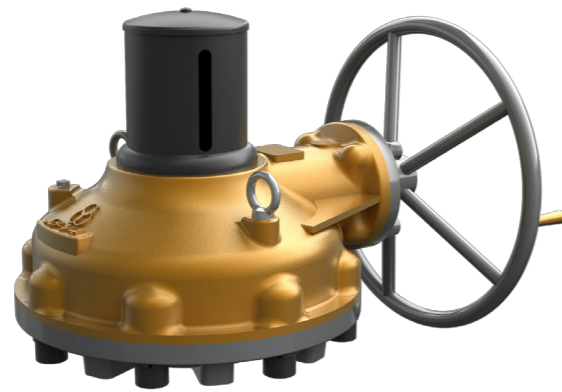


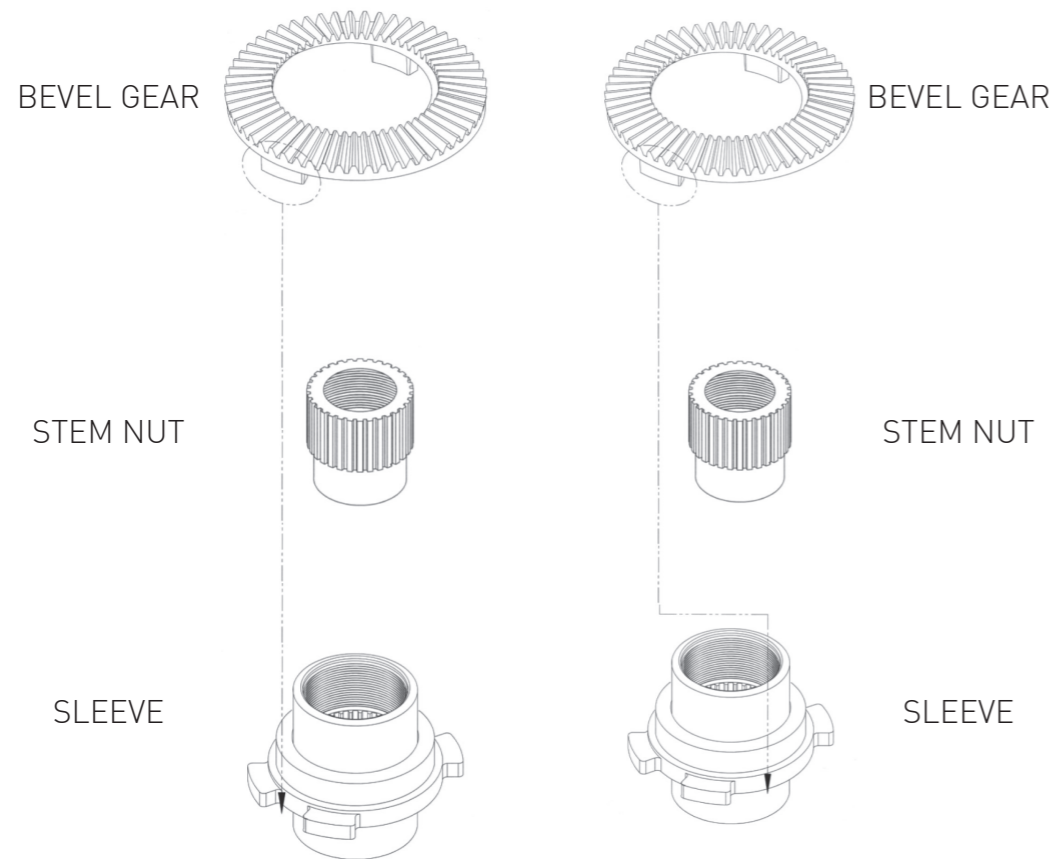
**BEVEL GEAR ACTUATORS**

The SB Series Bevel Gears have the ability to be assembled with “Lost-Motion-[Hammer blow]” or with “No-Lost Motion” output drive arrangement



**MOV TYPE**

**HANDLE TYPE**



**Fix Type**

**Hammer Blow Type**

**No-Lost Motion**

This Type eliminates the gap in the lug drive between the Bevel Gear and Drive Sleeve. It is the preferred method for Electric Actuators having positioning control capability.

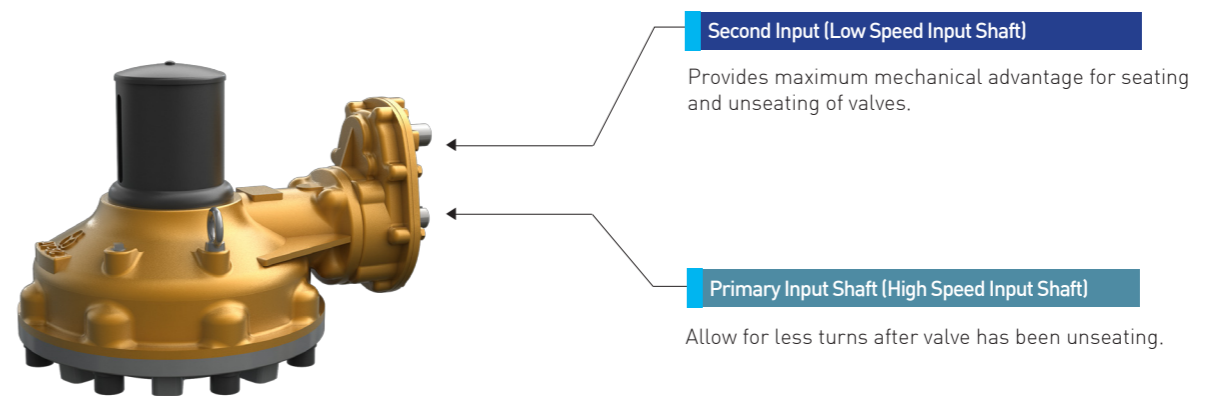
**Lost Motion (Hammer Blow)**

This type eliminates the gap in the lug drive between the Bevel Gear and Drive Sleeve Enabling a momentary impact. It is the preferred method for all Manual operation and for Electric Actuators of Wedge Gates and Globe Valves

**Chainwheel Type**

**Twin Shaft Gear Actuators Type**

There are two input shafts in the below support box type. One shaft is for high speed and the other shaft is for low speed.



The below input shaft type is used to require Gear Actuators which is operated by 2 spindles. As option, there are motorized type, dial type and manual type.

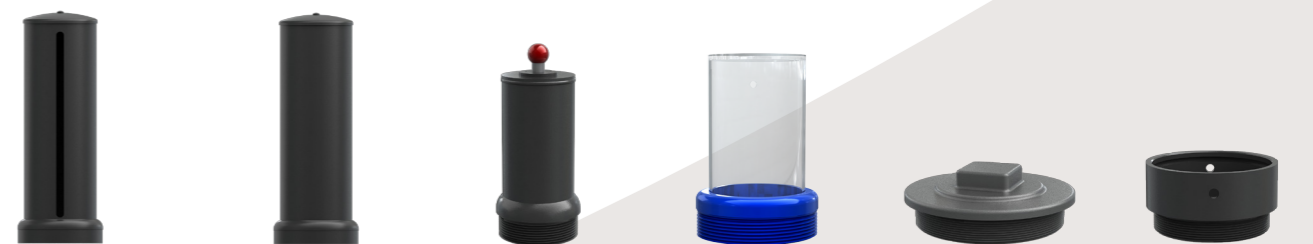
**Manual Both Ends**

**Manual / Motorised**



**Valve Spindle Cover Tubes**

Stem cover for valve can be offered as A53, SUS304, polycarbonate etc. Stem cover and indicator sets can be made by several different types. The length of stem cover will be changed as per customer's request.



Rising Indicators Type    No Hole Stem cover Type    Gauge Type    Polycarbonate Type (Transparent)    Stem Cap Type    PF Adapter Type

**The Other Used Options in SAMBO**

Sambo's standard input shaft rotation is based on a clockwise input resulting in a clockwise output [Clockwise In = Clockwise Out]. The reverse rotation can be operated. As per customer's request, it can be made by such types as buried, submersible, marine, radiation and high & low temperature service etc. Also, Gear ratio and specification of flange can be changed.