

## RF Level Measurement with Dual Seal Sensors



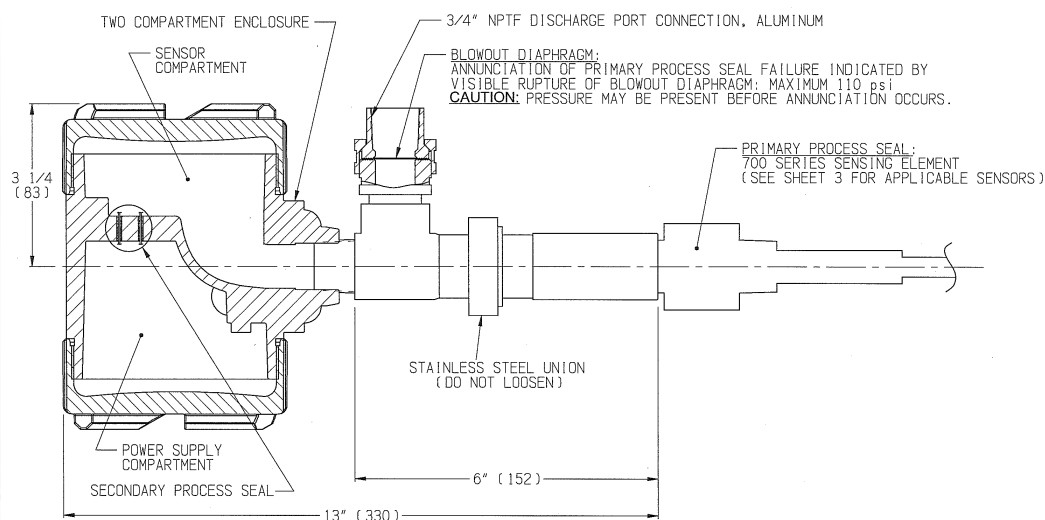
### Key Benefits

- Complies to Canadian Electrical Code Variance Safety Standard C22.1-06
- Provides a secondary “Dual Seal” for many commonly used RF sensors
- Prevents Hazardous Process Gases and materials from entering wiring and conduit runs
- Provides a customer connection to allow routing or containment of materials that have by-passed the sensor’s primary seal
- FM & CSA Approved for Class I, Div. 1 hazardous installations
- Existing RF Sensors can be retrofitted to have the dual seal permanently attached via factory
- Economically priced in comparison to similar secondary sealing devices

Prevents hazardous materials and gases from entering any wiring or cable conduit routings. Meets safety standard requirements for special process seals (secondary seals) in applications to ensure that process fluids or gases cannot pass through the conduit or cable into other areas upon failure of a single component.

Regardless of any reason for a primary seal failure on an RF sensor, the Dual Seal component option will prevent leakage of the process material or gas escaping into wiring runs or non-hazardous area classifications.

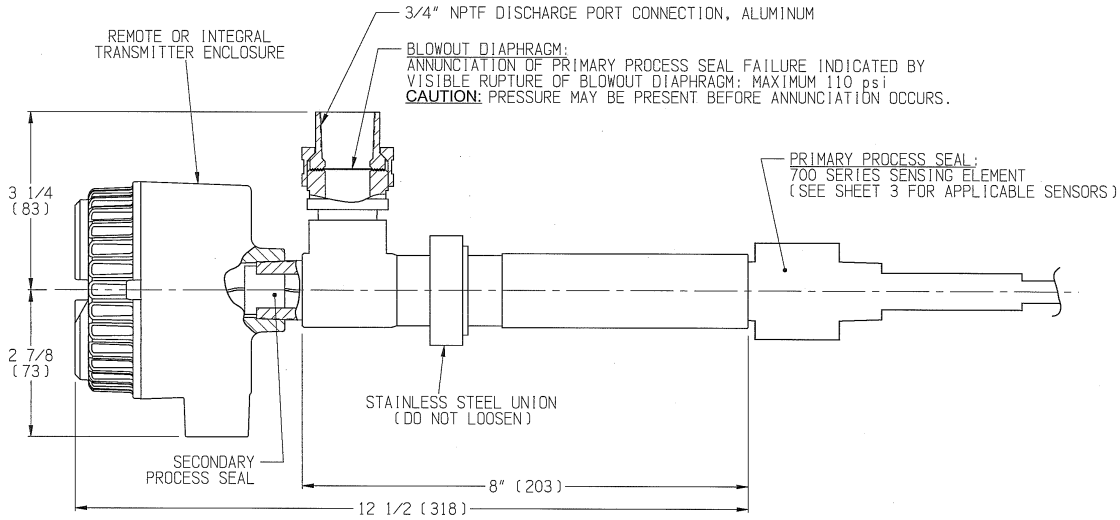
285-0003-01X DUAL SEAL CONFIGURATION FOR TWO COMPARTMENT ENCLOSURE



# Point Level Measurement

## RF Level Measurement with Dual Seal Sensors

285-0003-02X DUAL SEAL CONFIGURATION FOR SINGLE COMPARTMENT ENCLOSURE



### Dual Seal Designs for the Following RF Sensors

SENSOR MODEL #	PRIMARY SEAL WETTED MATERIALS
700-0001-022	TFE/316SS
700-0001-024	TFE/316SS
700-0001-026	TFE/316SS
700-0001-034	TFE/CS
700-0001-040	POLYETHYLENE/316SS
700-0001-044	PFA/316SS
700-0001-054	TFE/316SS
700-0001-064	TFE/316SS
700-0001-074	TFE/316SS
700-0001-344	PFA/316SS
700-0002-023	TFE/316SS
700-0002-024	TFE/316SS
700-0002-027	FEP/TFE/316SS
700-0002-028	TFE/316SS
700-0002-033	TFE/316SS
700-0002-037	PVDF/TFE/316SS
700-0002-040	UHMW PE/SILICONE/316SS
700-0002-044	PVDF/TFE/316SS

SENSOR MODEL #	PRIMARY SEAL WETTED MATERIALS
700-0002-054	FEP/TFE/316SS
700-0002-057	PVDF/TFE/316SS
700-0002-064	PVDF/TFE/316SS
700-0002-224	TFE/316SS
700-0002-321	FEP/TFE/316SS
700-0002-360	PFA/TFE/316SS
700-0201-005	TFE/316SS
700-0201-025	TFE/316SS
700-0201-026	TFE/316SS
700-0201-027	TFE/316SS
700-0201-028	TFE/316SS
700-0201-035	TFE/316SS
700-0201-051	TFE/316SS
700-0201-052	TFE/316SS
700-0201-058	TFE/316SS
700-0201-059	TFE/316SS
700-0202-002	TFE/316SS
700-0202-053	TFE/316SS

SENSOR MODEL #	PRIMARY SEAL WETTED MATERIALS
700-1202-001	PEEK/316SS
700-1202-010	PEEK/316SS
700-1202-012	PEEK/316SS
700-1202-014	PEEK/316SS
700-1202-018	PEEK/316SS
700-1202-020	PEEK/316SS
700-1202-021	PEEK/316SS
700-1202-028	PEEK/316SS
700-1202-031	PEEK/316SS
700-1202-032	PEEK/316SS
700-1202-033	PEEK/316SS
700-1202-034	PEEK/316SS
700-1202-041	PEEK/316SS
700-1202-042	PEEK/316SS
700-1202-061	PEEK/316SS
700-1202-081	PEEK/316SS
700-9100-303	PEEK/316SS

**AMETEK® DREXELBROOK®**

205 Keith Valley Road, Horsham, PA 19044 U.S.A.

Tel: 215-674-1234 Fax: 215 674-2731

Email: [drexelbrook.info@ametek.com](mailto:drexelbrook.info@ametek.com)

Web: [www.drexelbrook.com](http://www.drexelbrook.com)